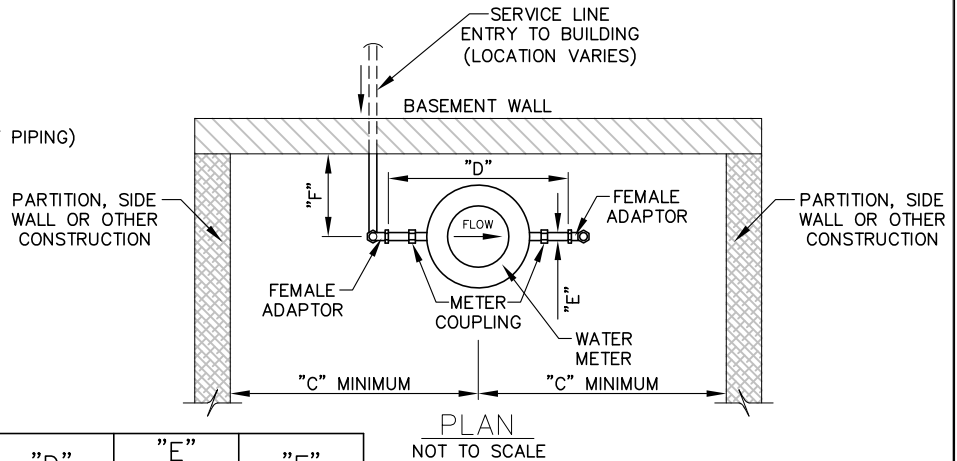
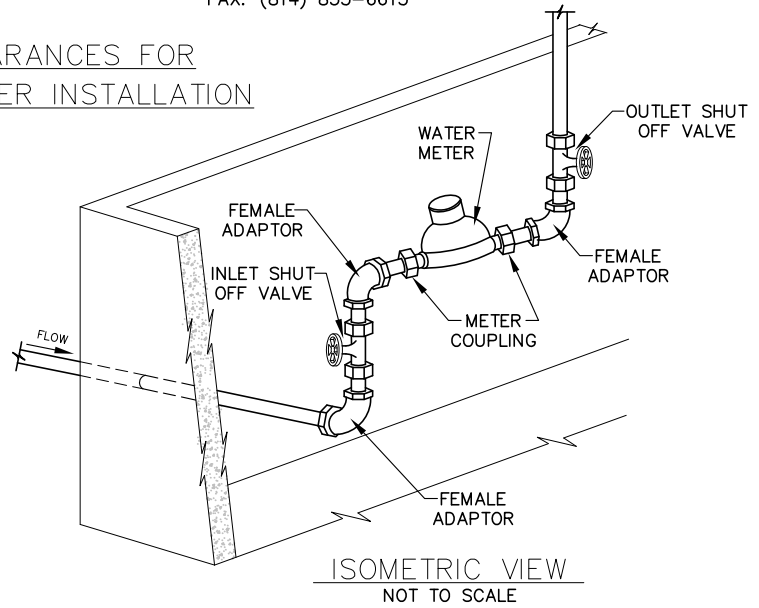
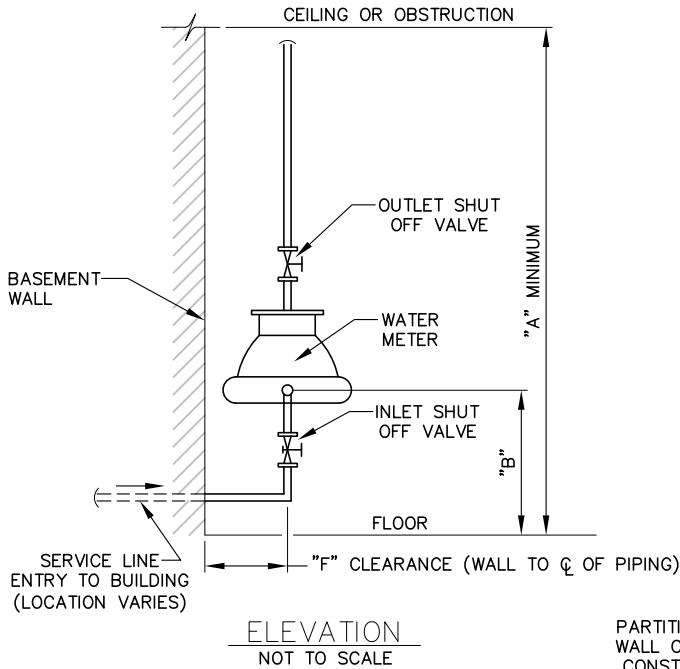


MILLCREEK TOWNSHIP WATER AUTHORITY

PHONE: (814) 835-6721

FAX: (814) 835-6615

STANDARD CLEARANCES FOR INDOOR WATER METER INSTALLATION



METER SIZE	"A" MIN.	"B"		"C" MIN.	"D" MIN.	"E" PIPE THREAD	"F" MIN.
		MIN.	MAX.				
5/8" x 3/4"	6'-0"	18"	36"	18"	12"	3/4"	6"
3/4" METER	6'-0"	18"	36"	18"	13 1/2"	3/4"	6"
1" METER	6'-0"	18"	36"	18"	15 1/2"	1"	6"

METER INSTALLATION GUIDELINES

1. THE STANDARD RESIDENTIAL METER SIZE IS 5/8" x 3/4", HOWEVER PLEASE VERIFY THE CORRECT SIZE WITH THE WATER AUTHORITY BEFORE INSTALLATION. THE ABOVE DIMENSIONS MAY DIFFER IF A PRESSURE REGULATING VALVE IS REQUIRED.
2. THE METER IS REQUIRED TO BE CONSTRUCTED AND INSTALLED IN A HORIZONTAL POSITION.
3. THE METER MUST BE LOCATED AS NEAR AS POSSIBLE TO THE POINT OF ENTRY OF THE SUPPLY LINE.
4. THE METER MUST BE LOCATED TO BE SAFE FROM FREEZING AND ACCESSIBLE FOR READING, INSPECTION AND REPLACEMENT.
5. THE METER CANNOT BE INSTALLED UNTIL ALL CONNECTIONS BETWEEN AUTHORITY SUPPLY AND ANY OTHER SOURCE OF WATER HAS BEEN REMOVED.
6. AN APPROVED BACKFLOW DEVICE IS REQUIRED ON ALL NON-RESIDENTIAL BUILDINGS.
7. THE SERVICE SUPPLY LINE MUST BE TYPE "K" COPPER TUBING AND MUST BE INSPECTED BEFORE BACKFILLING.
8. SHUT OFF VALVES ARE REQUIRED ON BOTH THE INLET AND OUTLET SIDE OF THE METER. FULL PORT BALL VALVES ARE RECOMMENDED FOR BOTH.