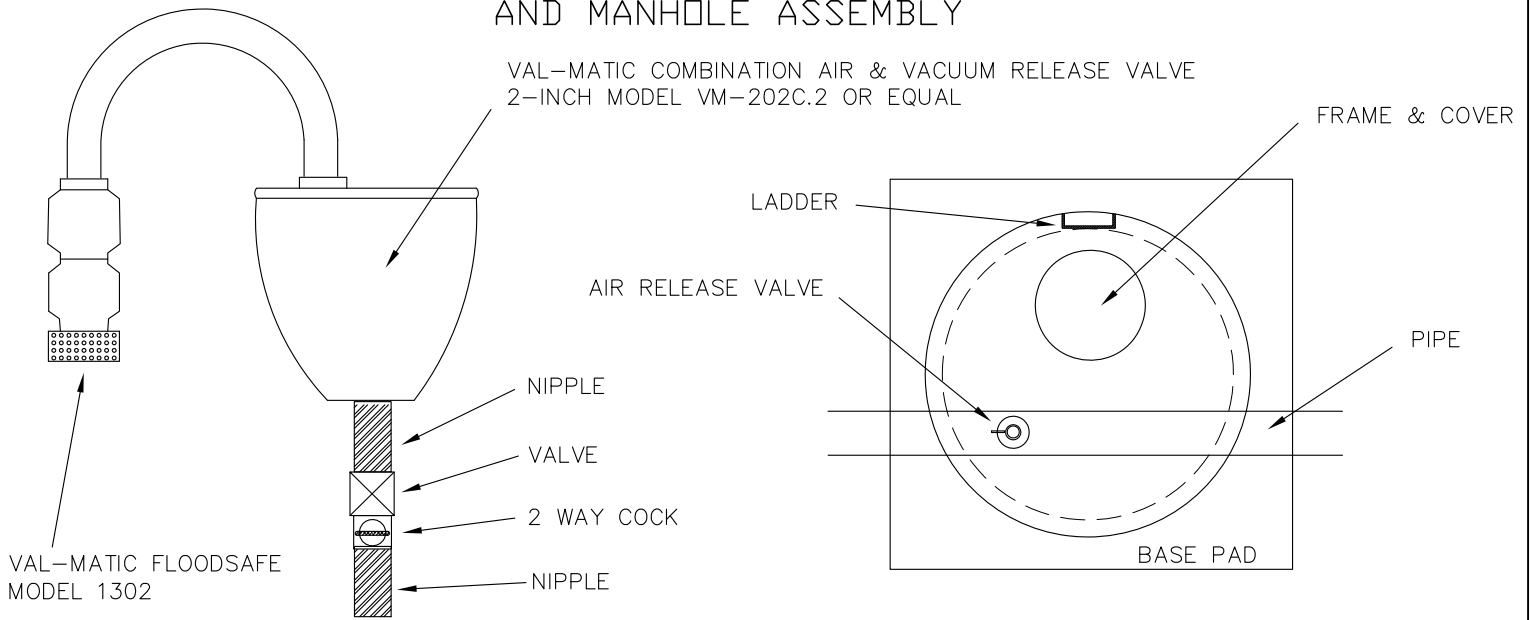


AIR RELEASE VALVE

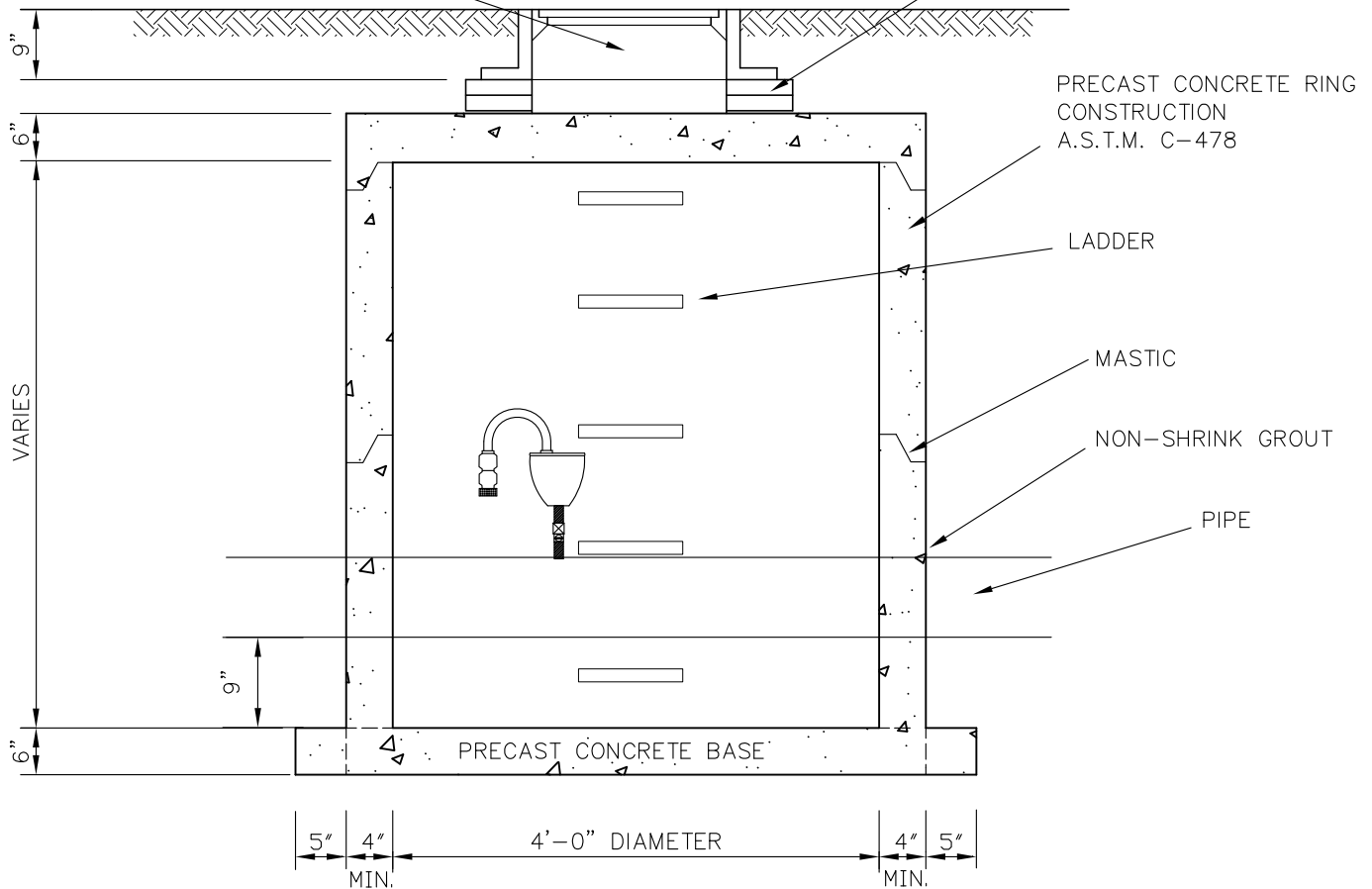
AND MANHOLE ASSEMBLY

VAL-MATIC COMBINATION AIR & VACUUM RELEASE VALVE
2-INCH MODEL VM-202C.2 OR EQUAL



EAST JORDON 1975AGS FRAME & COVER OR APPROVED
EQUAL WITH "WATER" CAST INTO THE LID.

2 COURSE PRECAST
ADJUSTING RINGS &
MORTAR IF NEEDED



NOTES:

1. PRECAST SECTIONS TO BE JOINED WITH TONGUE AND GROOVE JOINTS SEALED WITH MASTIC TYPE BITUMINOUS JOINTING COMPOUND.
2. EXTERIOR OF M.H. TO BE BITUMINOUS COATED.
3. MINIMUM SLOPE THROUGH M.H. SHALL BE 0.1' IN 4' OR 2.50%.
4. MANHOLES WITHIN STATE R/W TO BE PENN DOT APPROVED.